



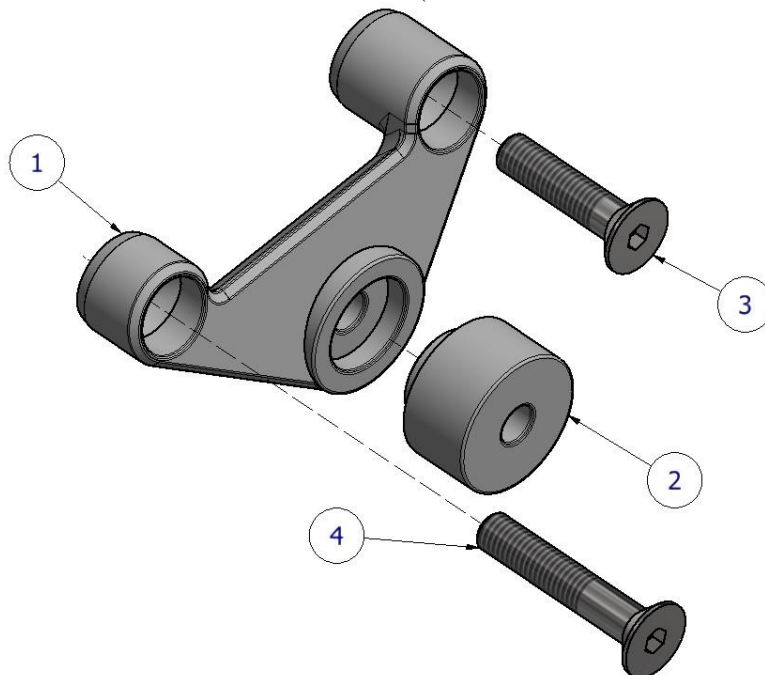
FITTING INSTRUCTIONS FOR EH0086BK EXHAUST HANGER
KTM DUKE 790 '18-



THIS KIT CONTAINS THE ITEMS PICTURED AND LABELLED BELOW.
DO NOT PROCEED UNTIL YOU ARE SURE ALL PARTS ARE PRESENT.

Please note that the way the kit is packed does not necessarily represent the way of mounting to the bike.

THE PARTS SHOWN MAY BE REPRESENTATIVE ONLY (FOR CLARITY OF INSTRUCTIONS ONLY).





LEGEND

ITEM 1 = EXHAUST HANGER (HB0086) (x1)

ITEM 2 = SPACER (S1122) (x1)

ITEM 3 = M8 x 35mm LONG COUNTERSUNK BOLT (x1)

ITEM 4 = M8 x 45mm LONG COUNTERSUNK BOLT (x1)

Page | 2

TOOLS REQUIRED

- Set of metric allen keys.
- Set of Torx drivers.
- Set of metric spanners.

MAXIMUM TORQUE SETTINGS

- M6 Bolt = 15Nm
- M8 Bolt = 20Nm



Picture 1



Picture 2



Picture 3



Picture 4

R&G

Unit 1, Shelley's Lane, East Worldham, Alton, Hampshire, GU34 3AQ

Tel: +44 (0)1420 89007 Fax: +44 (0)1420 87301 www.rg-racing.com Email: info@rg-racing.com



FITTING INSTRUCTIONS

- Loosen the exhaust clamp shown in picture 1. Do not remove completely.
- Support the exhaust silencer appropriately.
- Remove the 3 torx bolts shown in picture 2.
- Remove the pillion footrest as shown in picture 3.
- Place the stepped side of the spacer (item 2) into the recess in the exhaust hanger (item 1).
- Offer up the exhaust hanger assembly to the exhaust as shown in picture 4 and secure using the longer bolt (item 4) at the rear and the shorter bolt (item 3) at the front. Use the OEM bolt, washer and nut to secure the lower mount as shown in picture 4.
- Re-tighten the exhaust clamp.

Page | 3

Please note that it is your responsibility to ensure that no part of the exhaust hanger or exhaust assembly fouls or comes into contact with other parts of the machine. Do not ride the motorcycle until this aspect has been verified and you have compressed the rear suspension (if appropriate to the design of the motorcycle) to test this thoroughly.

ISSUE 11/07/2018 (HB)

Digital copies of these instructions are available to download from www.rg-racing.com

CONSUMER NOTICE

The catalogue description and any exhibition of samples are only broad indications of the Products and R&G may make design changes which do not diminish their performance or visual appeal and supplying them in such state shall conform to the order. The Buyer acknowledges no representation or warranty (other than as to title) has been given or will apply to the Products other than those in R&G's order or confirmation and the Buyer confirms it has chosen the Products as being of merchantable quality and suitable for its particular purposes. Where R&G fits the Products or undertakes other services it shall exercise reasonable skill and care and rectify any fault free of charge unless the workmanship has been disturbed. The Buyer is responsible for ensuring that the warranty on the motorcycle is not affected by the fitting of the Products. On return of any defective Products R&G shall at its option either supply a replacement or refund the purchase money but shall not be liable if the Products have been modified or used or maintained otherwise than in accordance with R&G's or manufacturer's instructions and good engineering practice or if the defect arises from accident or neglect. Other than identified above and subject to R&G not limiting its liability for causing death and personal injury, it shall not be liable for indirect or consequential loss and otherwise its liability shall be limited to the amounts paid by the Buyer for the Products or the fitting or service concerned. These terms do not affect the Buyer's statutory rights.

R&G RETURNS POLICY (NON-FAULTY GOODS)

Returns must be pre-authorized (if not pre-authorized the return will be rejected). Goods may only be returned direct to us if they were purchased direct from us (customer must prove if necessary). Otherwise to be returned to original vendor. Goods must be in re-sellable condition, in the opinion of R&G. All returns are subject to a 25% restocking and handling fee (25% of the gross value exc. P&P – at the prevailing price at time of purchase). The customer must pay any and all carriage charges. No returns of discontinued products, unless within 14 days of purchase. This policy does not affect your statutory rights and does not refer to faulty goods.

R&G

Unit 1, Shelley's Lane, East Worldham, Alton, Hampshire, GU34 3AQ
 Tel: +44 (0)1420 89007 Fax: +44 (0)1420 87301 www.rg-racing.com Email: info@rg-racing.com



NOTICE DE MONTAGE POUR EH0086BK SUPPORT POT D'ÉCHAPPEMENT
KTM DUKE 790 '18-

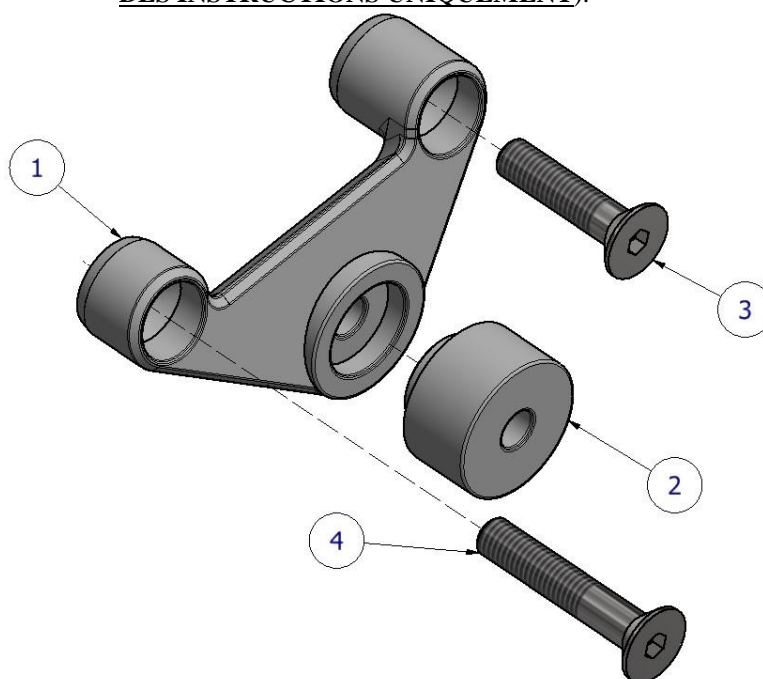
Page | 4



Le kit contient les articles exposés ci-dessous, vérifier que toutes les pièces soient présentes avant de procéder au montage.

LA FAÇON DONT LE KIT EST EMBALLE NE CORRESPOND PAS FORCEMENT A LA FAÇON DE MONTER LES PIÈCES SUR LA MOTO.

LES PARTIES PRESENTÉES PEUVENT ÊTRE UNIQUEMENT REPRESENTATIVES (POUR LA CLARTE DES INSTRUCTIONS UNIQUEMENT).



R&G

Unit 1, Shelley's Lane, East Worldham, Alton, Hampshire, GU34 3AQ
 Tel: +44 (0)1420 89007 Fax: +44 (0)1420 87301 www.rg-racing.com Email: info@rg-racing.com



LÉGENDE

ARTICLE 1 = SUPPORT D'ÉCHAPPEMENT (HB0086) (x1)

ARTICLE 2 = ENTRETOISE (S1122) (x1)

ARTICLE 3 = M8 x 35mm BOULON (x1)

ARTICLE 4 = M8 x 45mm BOULON (x1)

Page | 5

OUTILS REQUIS

- Clés Allen.
- Clés Torx.
- Clé à cliquet + douilles.

VALEURS DE SERRAGE

- M6 Boulon = 15Nm
- M8 Boulon = 20Nm

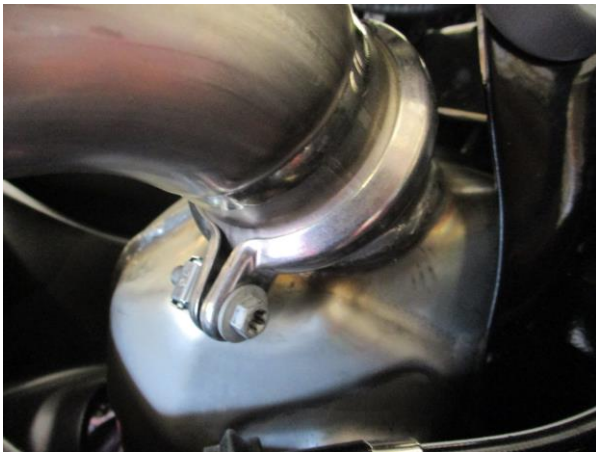


Photo 1



Photo 2



Photo 3



Photo 4

R&G

Unit 1, Shelley's Lane, East Worldham, Alton, Hampshire, GU34 3AQ

Tel: +44 (0)1420 89007 Fax: +44 (0)1420 87301 www.rg-racing.com Email: info@rg-racing.com



NOTICE DE MONTAGE

- Desserrer l'attache d'échappement, voir photo 1. Ne pas enlever complètement.
- Supporter le silencieux d'échappement de façon appropriée.
- Enlever les 3 boulons Torx, voir photo 2.
- Enlever le repose pied passager, voir photo 3.
- Placer le côté cranté de l'entretoise (article 2) dans le creux du support d'échappement (article 1).
- Monter l'ensemble du support d'échappement, voir photo 4 et fixer à l'aide du boulon (article 4) à l'arrière et le boulon court (article 3) à l'avant. Utiliser le boulon d'origine, la rondelle et l'écrou pour fixer le support inférieur, voir photo 4.
- Reserrer l'attache d'échappement.

Page | 6

Il est de votre responsabilité de veiller à ce qu'aucune partie du support de pot d'échappement ne puisse entrer en contact avec d'autres parties de la moto. Ne pas utiliser la moto tant que ce point n'a pas été vérifié, en ayant compressé l'amortisseur arrière (si le design de la moto le permet).

ISSUE 11/07/2018 (HB)

Notice disponible au téléchargement sur www.rg-racing.com

CONSUMER NOTICE

The catalogue description and any exhibition of samples are only broad indications of the Products and R&G may make design changes which do not diminish their performance or visual appeal and supplying them in such state shall conform to the order. The Buyer acknowledges no representation or warranty (other than as to title) has been given or will apply to the Products other than those in R&G's order or confirmation and the Buyer confirms it has chosen the Products as being of merchantable quality and suitable for its particular purposes. Where R&G fits the Products or undertakes other services it shall exercise reasonable skill and care and rectify any fault free of charge unless the workmanship has been disturbed. The Buyer is responsible for ensuring that the warranty on the motorcycle is not affected by the fitting of the Products. On return of any defective Products R&G shall at its option either supply a replacement or refund the purchase money but shall not be liable if the Products have been modified or used or maintained otherwise than in accordance with R&G's or manufacturer's instructions and good engineering practice or if the defect arises from accident or neglect. Other than identified above and subject to R&G not limiting its liability for causing death and personal injury, it shall not be liable for indirect or consequential loss and otherwise its liability shall be limited to the amounts paid by the Buyer for the Products or the fitting or service concerned. These terms do not affect the Buyer's statutory rights.

R&G RETURNS POLICY (NON-FAULTY GOODS)

Returns must be pre-authorized (if not pre-authorized the return will be rejected). Goods may only be returned direct to us if they were purchased direct from us (customer must prove if necessary). Otherwise to be returned to original vendor. Goods must be in re-sellable condition, in the opinion of R&G. All returns are subject to a 25% restocking and handling fee (25% of the gross value exc. P&P – at the prevailing price at time of purchase). The customer must pay any and all carriage charges. No returns of discontinued products, unless within 14 days of purchase. This policy does not affect your statutory rights and does not refer to faulty goods.

R&G

Unit 1, Shelley's Lane, East Worldham, Alton, Hampshire, GU34 3AQ
 Tel: +44 (0)1420 89007 Fax: +44 (0)1420 87301 www.rg-racing.com Email: info@rg-racing.com



MONTAGEANLEITUNG FÜR EH0086BK AUSPUFFHALTERUNG
KTM DUKE 790 '18-

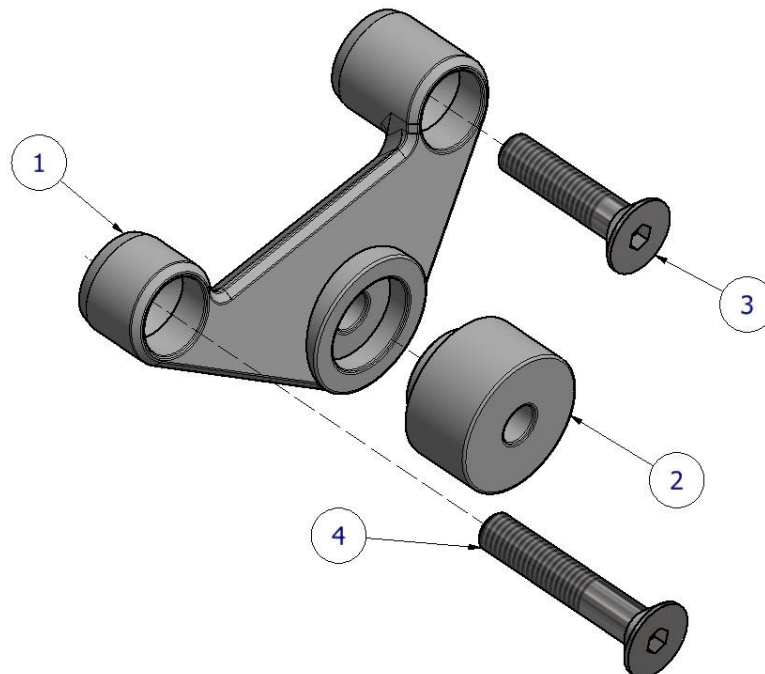


Page | 7

ALLE KIT-TEILE SIND UNTEN ABGEBILDET UND GEKENNZEICHNET. BEVOR SIE MIT DER MONTAGE BEGINNEN, ÜBERPRÜFEN SIE, DASS ALLE TEILE VORHANDEN SIND.

Hinweis: Die Verpackung der Teile stellt nicht die Reihenfolge der Montage dar.

DIE UNTEN ABGEBILDETEN TEILE DIENEN LEDIGLICH ZUR ERKLÄRUNG



R&G

Unit 1, Shelley's Lane, East Worldham, Alton, Hampshire, GU34 3AQ
 Tel: +44 (0)1420 89007 Fax: +44 (0)1420 87301 www.rg-racing.com Email: info@rg-racing.com



LIEFERUMFANG

ARTIKEL 1 = R&G AUSPUFFHALTERUNG (HB0086) (x1)

ARTIKEL 2 = DISTANZHALTER (S1122) (x1)

ARTIKEL 3 = M8 x 35mm SENKSCHRAUBE (x1)

ARTIKEL 4 = M8 x 45mm SENKSCHRAUBE (x1)

Page | 8

SIE BENÖTIGEN FOLGENDES WERKZEUG

- Satz Inbusschlüssel
- Satz Torx-Schlüssel
- Satz Schraubenschlüssel

MAX. ANZUGSDREHMOMENT

- M6 Schraube = 15Nm
- M8 Schraube = 20Nm



Abbildung 1



Abbildung 2



Abbildung 3



Abbildung 4

R&G

Unit 1, Shelley's Lane, East Worldham, Alton, Hampshire, GU34 3AQ

Tel: +44 (0)1420 89007 Fax: +44 (0)1420 87301 www.rg-racing.com Email: info@rg-racing.com



MONTAGEANLEITUNG

- Lösen Sie die Auspuffklemme, die in Abbildung 1 abgebildet ist. Nicht komplett entfernen.
- Den Auspuffschalldämpfer entsprechend stützen.
- Entfernen Sie die 3 Torx-Schrauben, die in Abbildung 2 abgebildet sind.
- Entfernen Sie die Beifahrer-Fußraste wie in Abbildung 3 abgebildet.
- Die gestufte Seite des Distanzhalters (Artikel 2) in die Vertiefung der Auspuffhalterung (Artikel 1) einlegen.
- Die Halterungseinheit am Auspuff anbringen wie in Abbildung 4 abgebildet – die längere Schraube (Artikel 4) hinten und die kürzere Schraube (Artikel 3) vorne. Benutzen Sie die Originalschraube, Unterlegscheibe und Mutter, um die untere Halterung zu befestigen – siehe Abbildung 4.
- Die Auspuffklemme wieder befestigen.

Page | 9

Wichtiger Hinweis: Es obliegt Ihrer Verantwortung sicherzustellen, dass keine Teile der Auspuffhalterung oder Auspuffanlage mit anderen Teilen des Motorrades in Berührung kommen und/oder sie beschädigen. Fahren Sie nicht mit dem Motorrad bis dies sorgfältig überprüft wurde und Sie den hinteren Federweg genau kontrolliert haben (falls zutreffend, Modellabhängig).

AUSGABE 11/07/2018 (HB)

Eine digitale Version dieser Montageanleitung kann auf folgender Seite heruntergeladen werden: www.rg-racing.com

CONSUMER NOTICE

The catalogue description and any exhibition of samples are only broad indications of the Products and R&G may make design changes which do not diminish their performance or visual appeal and supplying them in such state shall conform to the order. The Buyer acknowledges no representation or warranty (other than as to title) has been given or will apply to the Products other than those in R&G's order or confirmation and the Buyer confirms it has chosen the Products as being of merchantable quality and suitable for its particular purposes. Where R&G fits the Products or undertakes other services it shall exercise reasonable skill and care and rectify any fault free of charge unless the workmanship has been disturbed. The Buyer is responsible for ensuring that the warranty on the motorcycle is not affected by the fitting of the Products. On return of any defective Products R&G shall at its option either supply a replacement or refund the purchase money but shall not be liable if the Products have been modified or used or maintained otherwise than in accordance with R&G's or manufacturer's instructions and good engineering practice or if the defect arises from accident or neglect. Other than identified above and subject to R&G not limiting its liability for causing death and personal injury, it shall not be liable for indirect or consequential loss and otherwise its liability shall be limited to the amounts paid by the Buyer for the Products or the fitting or service concerned. These terms do not affect the Buyer's statutory rights.

R&G RETURNS POLICY (NON-FAULTY GOODS)

Returns must be pre-authorized (if not pre-authorized the return will be rejected). Goods may only be returned direct to us if they were purchased direct from us (customer must prove if necessary). Otherwise to be returned to original vendor. Goods must be in re-sellable condition, in the opinion of R&G. All returns are subject to a 25% restocking and handling fee (25% of the gross value exc. P&P – at the prevailing price at time of purchase). The customer must pay any and all carriage charges. No returns of discontinued products, unless within 14 days of purchase. This policy does not affect your statutory rights and does not refer to faulty goods.

R&G

Unit 1, Shelley's Lane, East Worldham, Alton, Hampshire, GU34 3AQ

Tel: +44 (0)1420 89007 Fax: +44 (0)1420 87301 www.rg-racing.com Email: info@rg-racing.com